



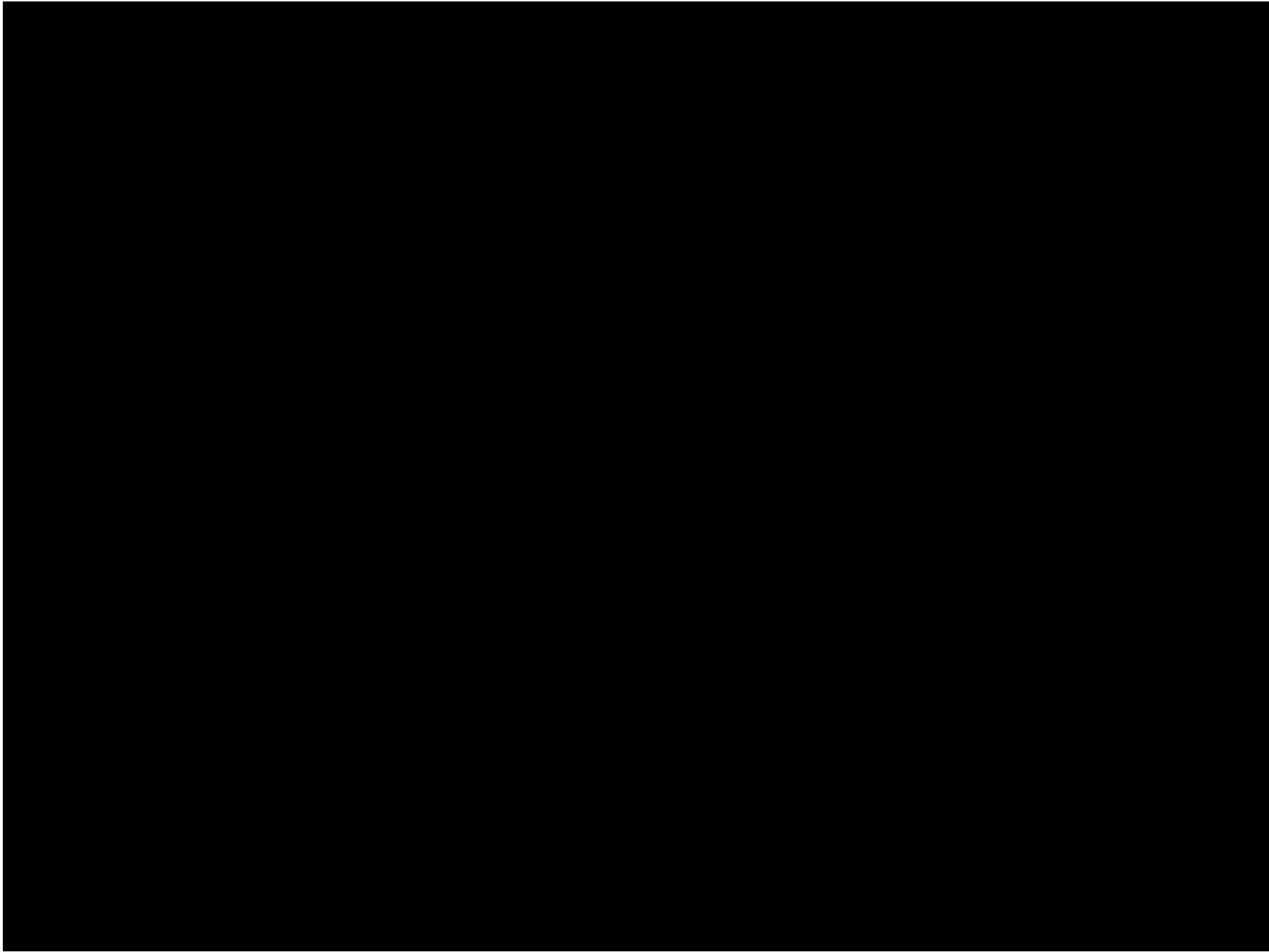
*A SPELL has been cast upon you by an
evil sorcerer.*



*The Spell has shrunk you down. Your entire guild is
now teeny tiny.*



*...And Just when you thought that it
could not get ANY worse.*



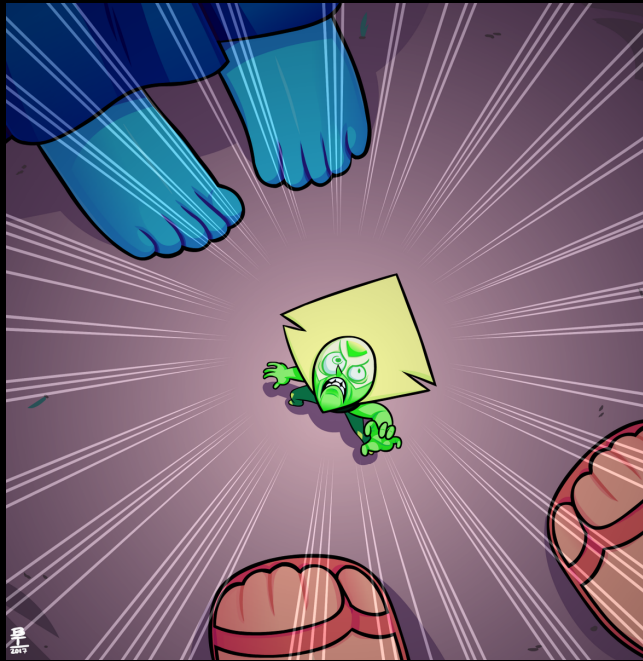
It gets worse!

Much, Much, Worse!

The evil SPELL starts to kick
in again...

...And You Continue Shrinking

Some More!



...And More!



...Until you are like...totally
small.



Now you are the size of a Carbon
Atom

Hi, I'm



Welcome To My World

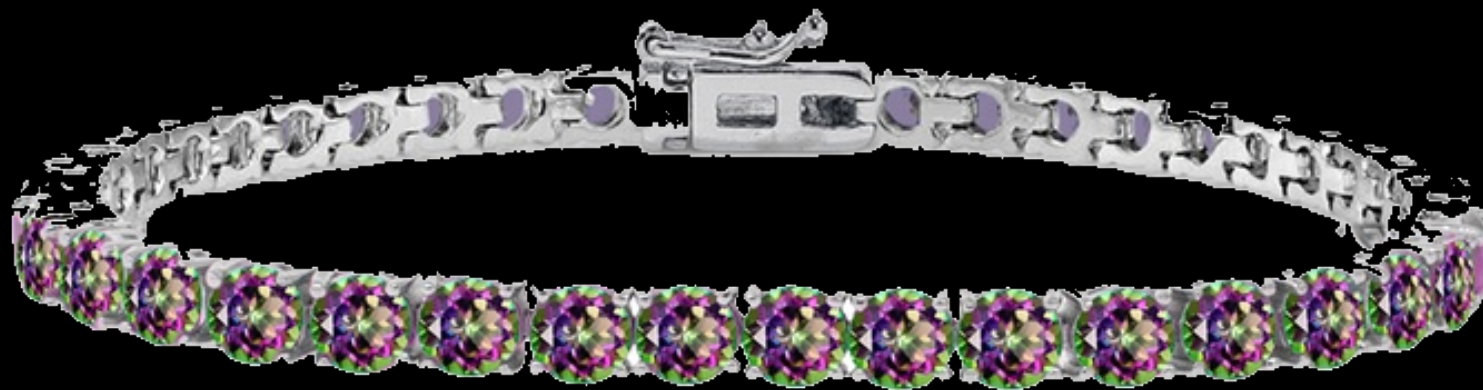
In the midst of all the panic, the
Mage in your guild takes a deep
breath and says, "Do not worry, I
know how to

BREAK the SPELL."

We need to follow some Carbon stones along their journey and then collect 15 of them. We will tie those 15 carbon stones into the shape of a bracelet or a ring.



Connecting both ends will UNLEASH the power
of the Carbon stones.



Then will the spell be broken?



"No...we must also present the results of our adventure in some creative manner like a story or puzzle. Rhymes and puzzles are especially effective against spells."



If we do *all* of that...only then will the spell
be **BROKEN!**



XP: 350XP

Badge: YES (100 Gold Value)

Carbon Badge For the best spell break

Artistic Badge for the most creative

Other Information: Must be completed
individually.